

KEY OPPORTUNITIES FOR INNOVATIVE SMES WORKSHOP

You are a R&DI performing SME interested in the opportunities offered by European programs?

You want to develop a R&DI project but the thematic calls do not match your idea and/or you would prefer to work in a small tailor-made consortium?

OR

You are an innovative company willing to fuel its growth and expansion through a sounded business strategy for its innovative products or services?

Innoviris, **NCP Brussels** and **Enterprise Europe Brussels** invite Brussels-based companies to learn more about 2 sets of opportunities to :

- Carry out R&DI activities with the support of European funding schemes (“bottom-up” Research and Innovation, i.e. calls for proposals not limited to specific fields or areas of work).
- Boost the business development of innovative products or services keeping the market perspective in strategy design.

Topics

European supporting schemes, particularly relevant for Brussels innovative SMEs in all sectors and themes.

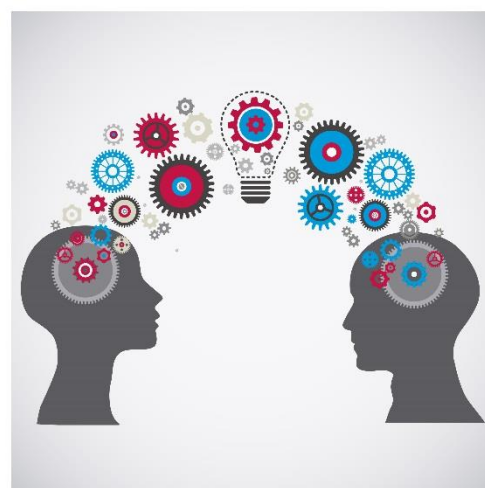
Objectives

- Get an overview of supporting opportunities particularly relevant for innovative SMEs and for R&DI SMEs.
- Understand the ratio, the purposes and the targeted audience of each supporting scheme.
- Understand differences among EU funding programs for R&DI activities and choose the right one for your idea.
- Meet advisors who can help you further in stepping in the most suitable approach.

Target

Brussels-based small and medium enterprises with innovative project ideas or business plan.

This workshop is not targeted at consultants.



DATE

Thursday 11 February 2016
From 13:00 to 17:00

VENUE

impulse.brussels
@ UNO.brussels
Chaussée de Charleroi 110
1060 Brussels

REGISTRATION

Deadline: 9 February 2016
Send an email to Michele Kaisin
mka@impulse.brussels

DRAFT AGENDA

13:00 - Registration & Welcome

1st Set of Opportunities - EU R&DI Funding and Prizes

13:30 - Horizon 2020 Fast-Track-to-Innovation Pilot and Prizes - by Tania Van Loon, NCP Coordinator at impulse

13:50 - Eureka Eurostars2 programme - by Mathilde Reumaux, International Projects Advisor at Innoviris

2nd Set of Opportunities – Business Development

14:10 - SME Instrument - by Tania Van Loon, NCP Coordinator at impulse

14:20 - Differences and complementarities between these sets- by Tania Van Loon, NCP Coordinator at impulse & Mathilde Reumaux, International Projects Advisor at Innoviris

14:40 - Coffee break

15:00 - Free-of-charge support available to Brussels SMEs for successful project funding:

- **NPC Brussels** - by Tania Van Loon, NCP Coordinator at impulse
- **Innoviris** - by Mathilde Reumaux, International Projects Advisor at Innoviris
- **Enterprise Europe Brussels** - by Barbara Andreani, Enterprise Europe Brussels Manager at impulse

15:40 - Interactive session with representatives of EASME and the Eureka Secretariat: tips & tricks, insider's view, Q/A

17:00 - Closing

impulse.brussels - www.abe-bao.be

Innoviris - www.innoviris.be

NCP Brussels - www.ncpbrussels.be

Enterprise Europe Brussels - www.brusselsnetwork.be

be innovative
be .brussels 